

# PowerU - FSP04

## Class II Switchgear Assemblies

Switchgear Assemblies for new installations and legacy upgrades (SIN119)

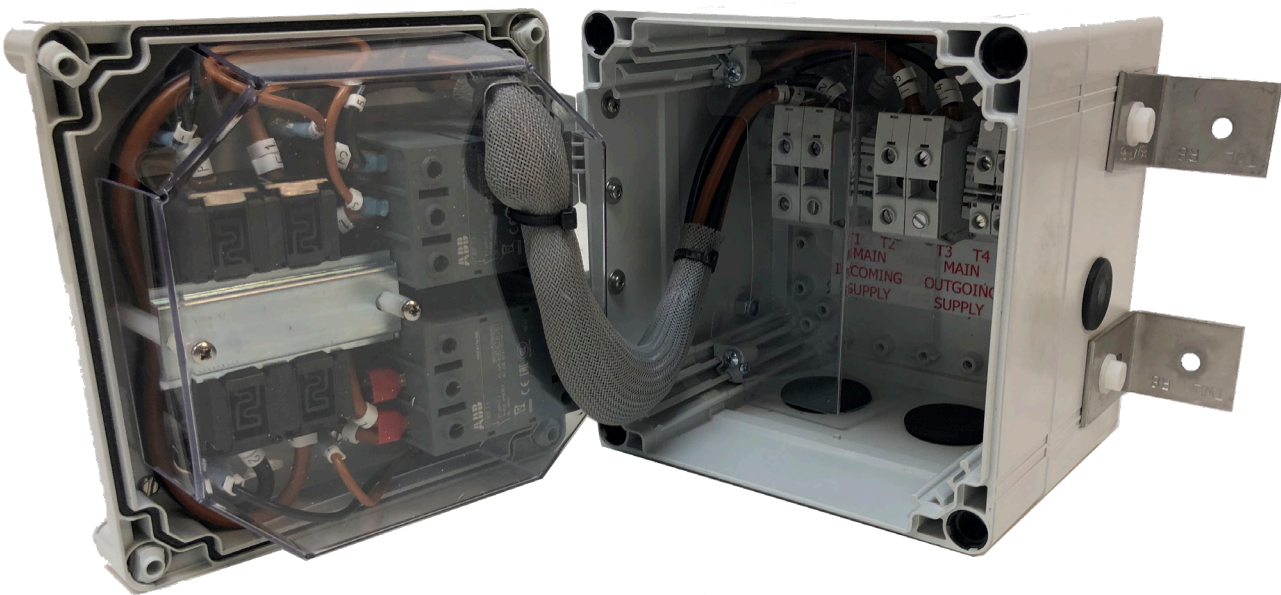


# FSP04 PowerU Switch Boxes

Full Class II type 04 switchgear assemblies for the upgrade of legacy switchgear and new feeder configurations serving Signalling Apparatus Housings.

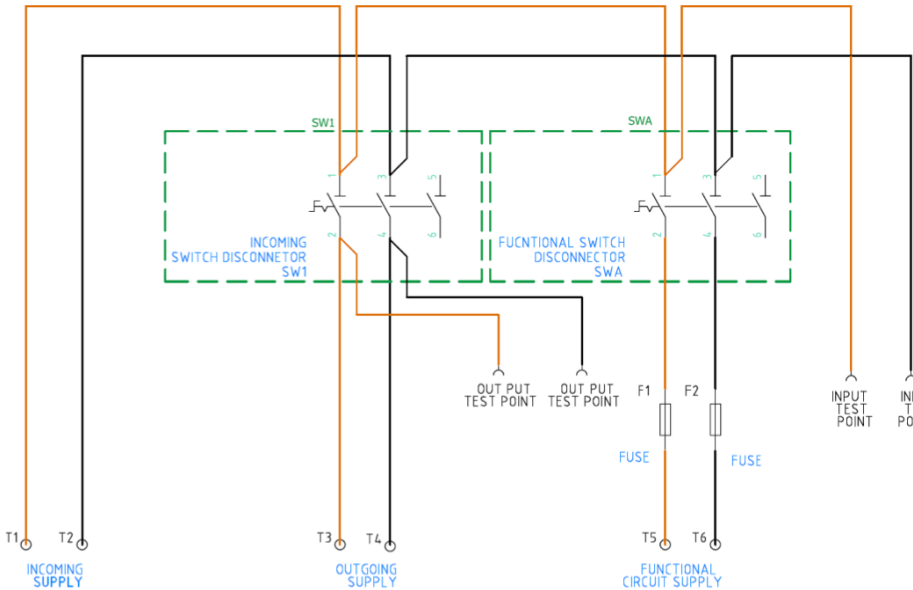
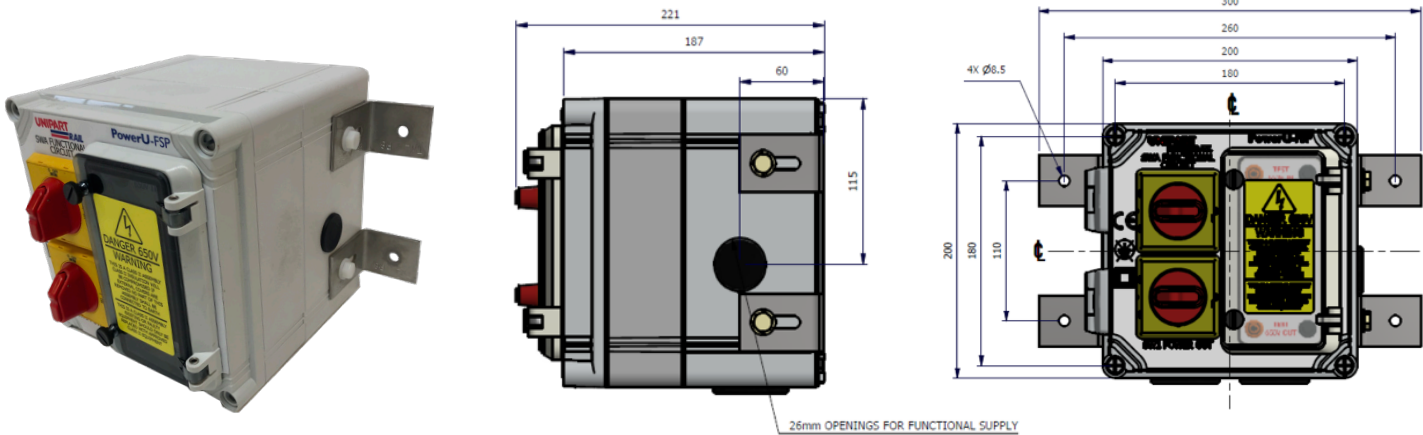
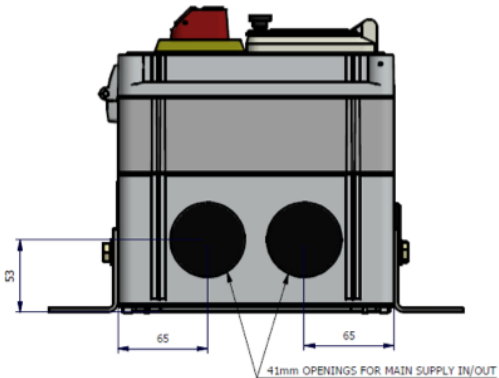
All Unipart Rail FSP04 Switch Box configurations share several important and integral design features:

- Fully earth free Class II design units rated for up to 650V
- Designed to meet Network Rail specification NR/L2/SIGELP/27409 ISS, 2
- CE Compliant
- For use with either Copper or Aluminium Cabling (appropriate crimps must be used on incoming and outgoing cables)
- Fitted with 80A Main Power In/Out Isolators
- IP54 Rated
- Can be back board, or rail mounted within an Apparatus Housing
- Designed, built and tested to conform with BS EN 61439 Pt2, with a dielectric strength certified to 5KV in accordance with BS EN 61439
- Single end fed or dual end fed from a main distribution system for SIN 119 Legacy upgrades
- PADS certificate PA05/06332



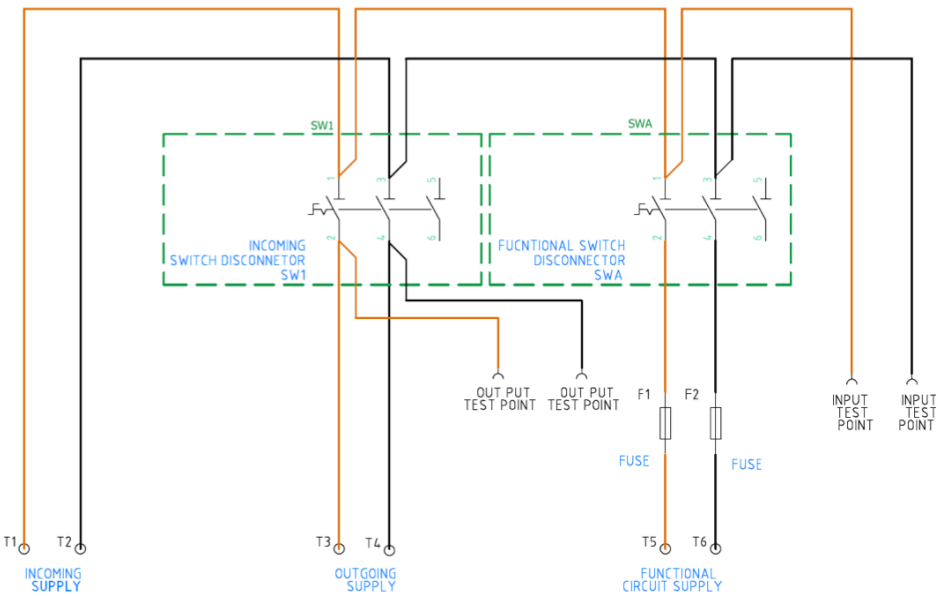
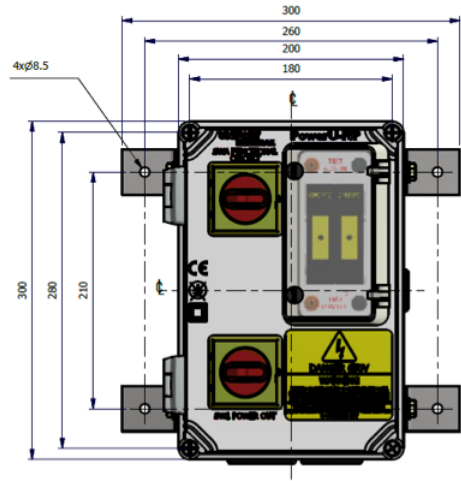
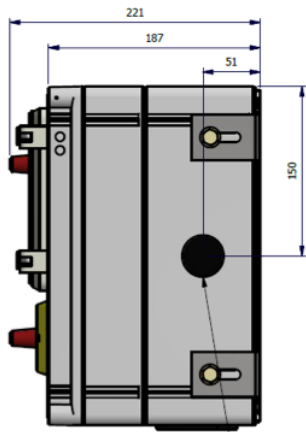
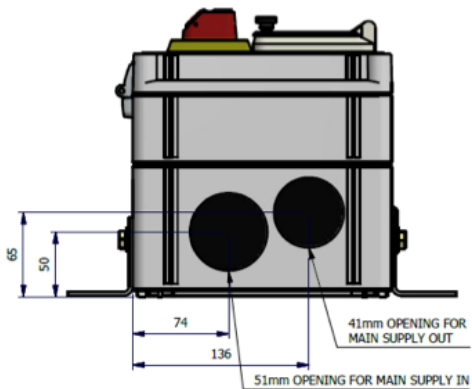
# Configurations: FSP04 - SBI & SB2

	SBI	SB2
Unipart Rail Cat No.s	0050/605930	0050/605929
PADs Number	0086/001556	0086/001557
Fuse Type	BS88	IEC (10 x 38)
Number of fuses	1 Pair	
Power Switches	1	
Functional Circuits	1	
Terminal Type	Tunnel	
Power Terminal Size	6-50mm <sup>2</sup>	
Functional Circuit Terminal Size	16mm <sup>2</sup>	



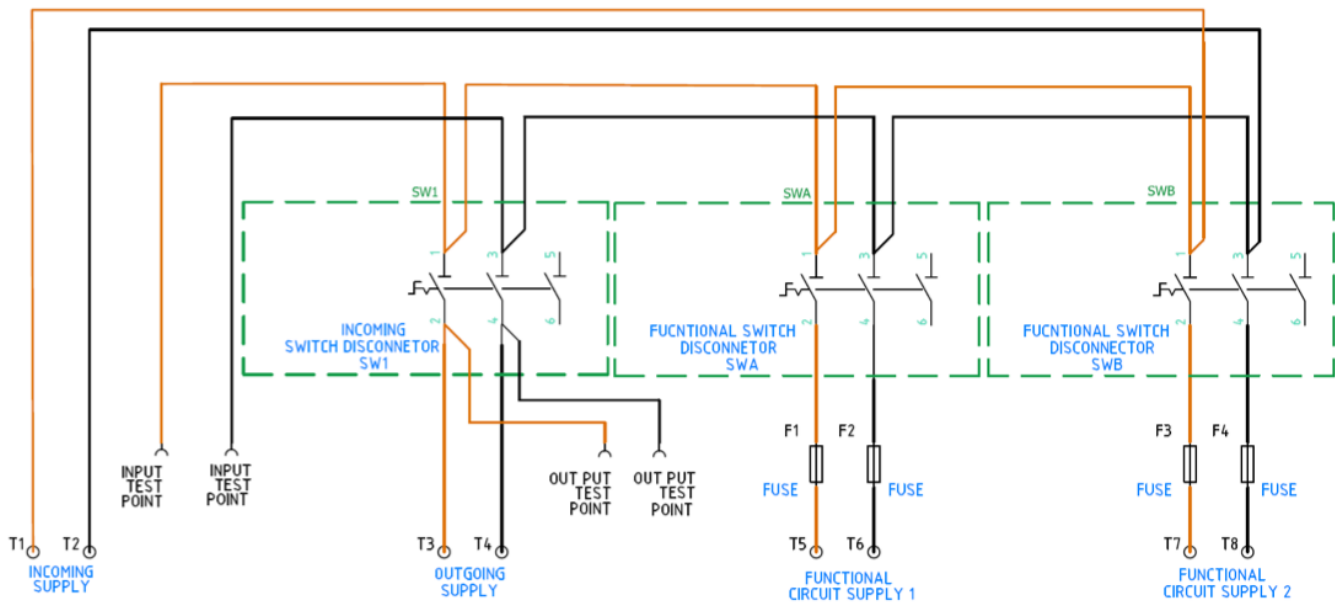
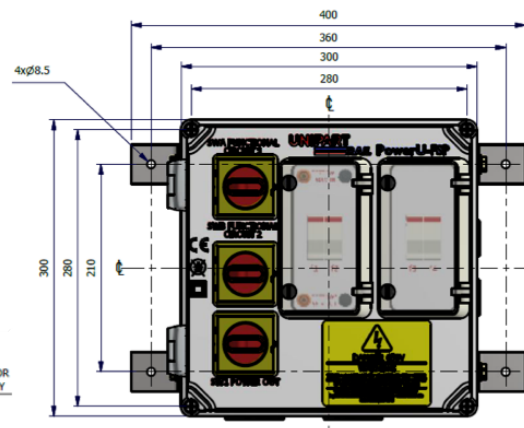
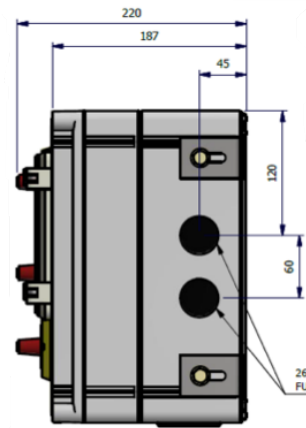
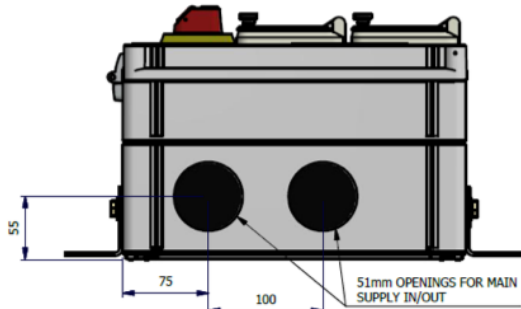
Configurations: FSP04 - SB3 & SB4

	SB3	SB4
Unipart Rail Cat No.s	0050/606504	0050/606505
PADs Number	0086/001558	0086/001559
Fuse Type	BS88	IEC (10 x 38)
Number of fuses	1 Pair	
Power Switches	1	
Functional Circuits	1	
Terminal Type	Tunnel	
Power Terminal Size	16-120mm <sup>2</sup>	
Functional Circuit Terminal Size	16mm <sup>2</sup>	



Configurations: FSP04 - SB5 & SB6

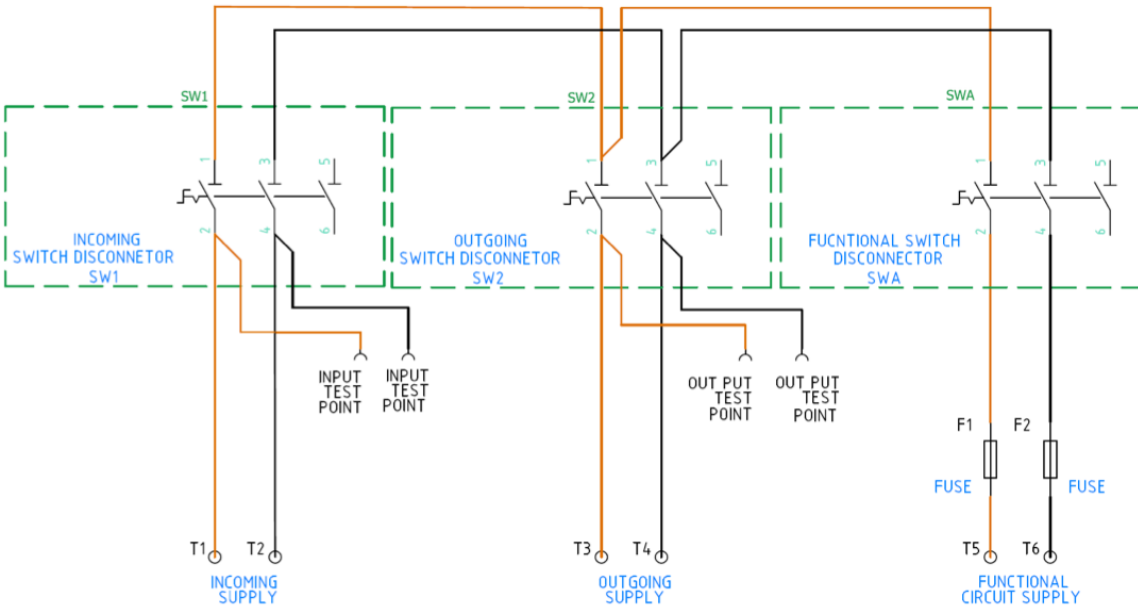
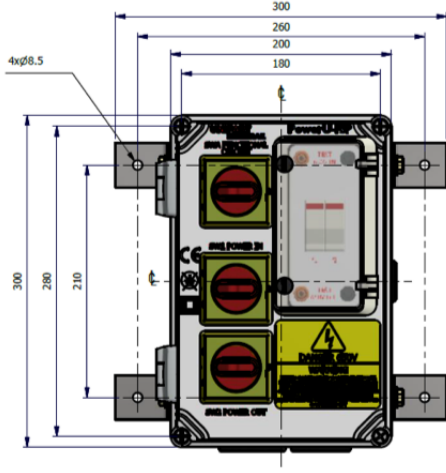
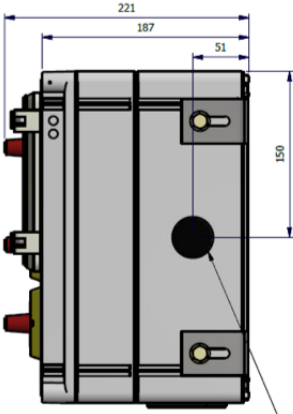
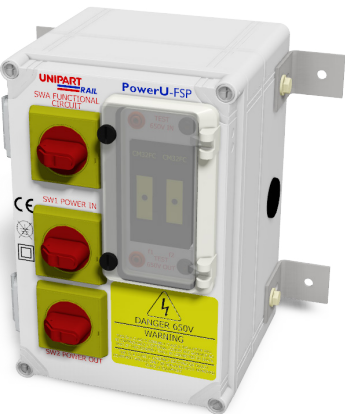
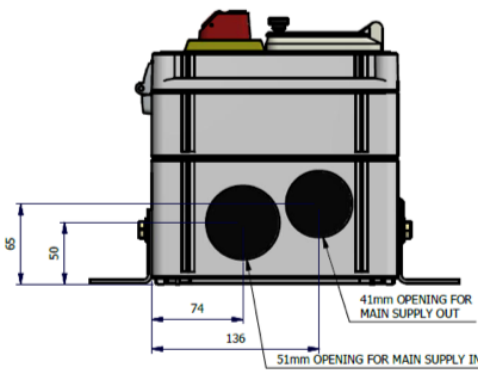
	SB5	SB6
Unipart Rail Cat No.s	0050/605932	0050/605931
PADs Number	0086/001560	0086/001561
Fuse Type	BS88	IEC (10 x 38)
Number of fuses	2 Pairs	
Power Switches	1	
Functional Circuits	2	
Terminal Type	Tunnel	
Power Terminal Size	6-120mm <sup>2</sup>	
Functional Circuit Terminal Size	16mm <sup>2</sup>	





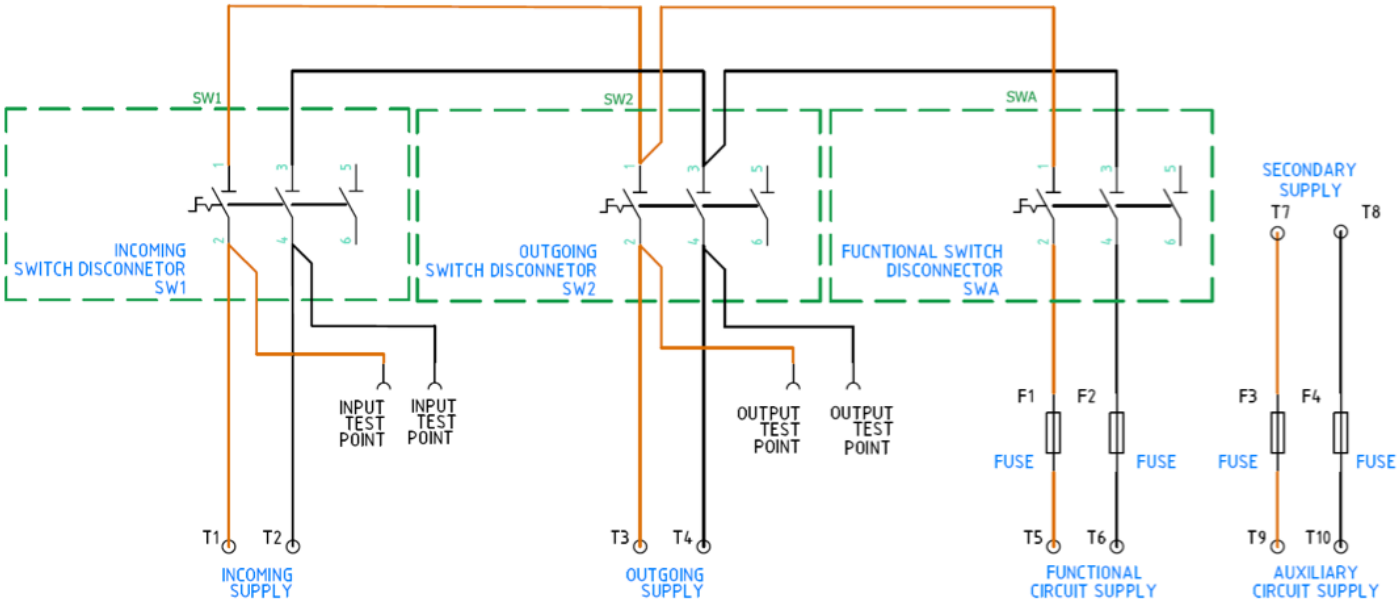
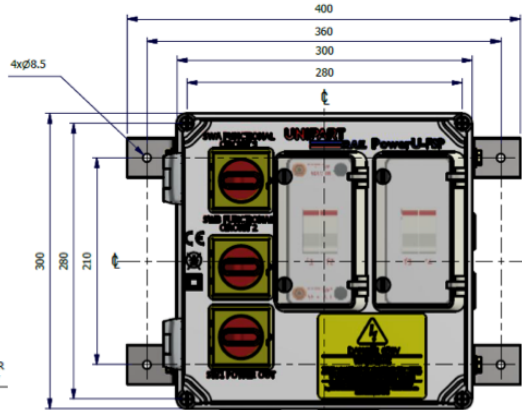
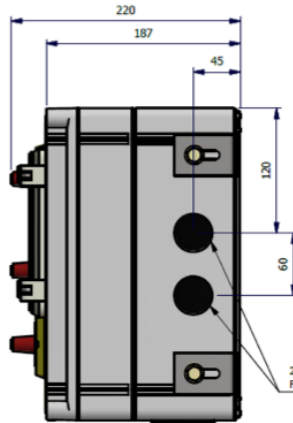
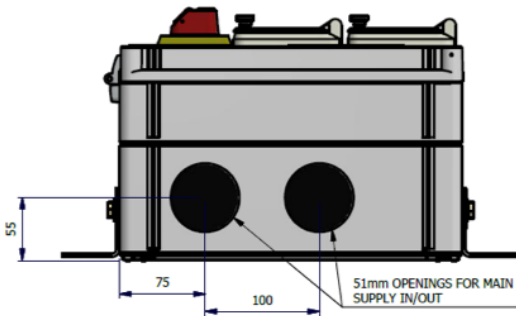
# Configurations: FSP04 - SB7 & SB8

	SB7	SB8
Unipart Rail Cat No.s	0050/606101	0050/606102
PADs Number	0086/001562	0086/001563
Fuse Type	BS88	IEC (10 x 38)
Number of fuses	1 Pair	
Power Switches	2	
Functional Circuits	1	
Terminal Type	Tunnel	
Power Terminal Size	16-120mm <sup>2</sup>	
Functional Circuit Terminal Size	16mm <sup>2</sup>	



# Configurations: FSP04 - SB9 & SB10

	SB9	SB10
Unipart Rail Cat No.s	0050/606502	0050/606503
PADs Number	0086/001564	0086/001565
Fuse Type	BS88	IEC (10 x 38)
Number of fuses	2 Pairs	
Power Switches	2	
Functional Circuits	1	
Auxiliary Circuit	1	
Terminal Type	Tunnel	
Power Terminal Size	6-120mm <sup>2</sup>	
Functional Circuit Terminal Size	16mm <sup>2</sup>	



## About Unipart

The Unipart Group is a leading UK manufacturer, full service logistics provider and consultant in operational excellence. Operating across a range of market sectors, including automotive, manufacturing, mobile telecoms, rail, retail and technology, Unipart offers a breadth of services to a wide range of blue chip clients internationally.

For information on the full Unipart Rail PowerU product range visit [www.unipartrail.com/power.html](http://www.unipartrail.com/power.html)

### Unipart Rail

Leeman Road, York,  
North Yorkshire YO26 4ZD  
Tel: +44 (0)1904 544 020  
Fax: +44 (0)1904 544 021  
email: [enquiries@unipartrail.com](mailto:enquiries@unipartrail.com)



Visit [www.unipartrail.com](http://www.unipartrail.com) for details  
of our Worldwide Regional Offices