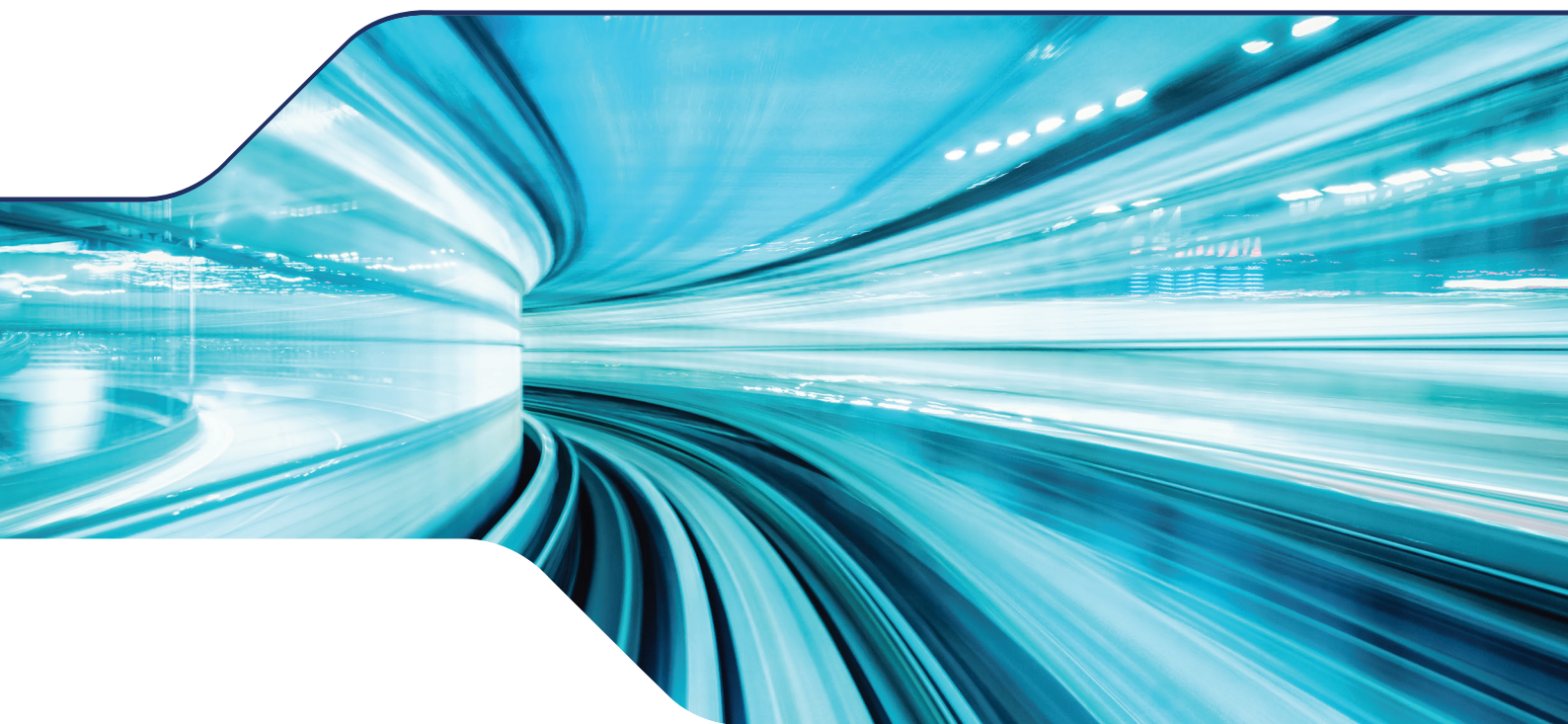


PowerU - SINI19 Products

Your single source partner for all SINI19 products



For information on the full Unipart Rail PowerU product range visit www.unipartrail.com/power.html

SERVING THE WORLD'S RAILWAYS

Your single source partner for all SIN 119 products

Supplying signalling power into the infrastructure requires a strong understanding of the industry requirements. With many years of experience, Unipart Rail provides that expertise and can supply the industry with a cost effective range of quality products.

With our in depth knowledge and proven experience of working with railway infrastructure, our product range caters for both new and legacy upgrade projects. Our range of in-house designed and built FSPs combined with readily available items such as Class II cables, cable protection and terminations, allows Unipart Rail to be your single source partner for all your SIN 119 requirements.

Safety is paramount



Electrical shock prevention is the reason for the existence of Special Inspection Notice 119 (SIN 119). Safety is something that we take very seriously, in our products as well as in the day to day running of our business. The products we manufacture are all assembled and individually tested in house and comply with all the relevant Network Rail standards.

This testing allows for greater traceability, safety and quality assurance which saves time for customers as the units are provided ready to fit. The safety driven culture across our business has resulted in our achievement of a Sword of Honour from the British Safety Council. We were one of only 61 organisations worldwide to achieve this, demonstrating our commitment to the management of health and safety risks at work.

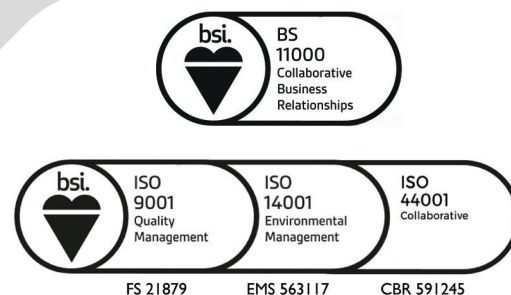
Availability is vital

When time is tight, efficiency is key.

Our SIN 119 Products are readily available and held in stock. And as a **Single Source Partner**, we are ready to meet your requirements.

All of the equipment that we manufacture has been designed for ease of use on site, resulting in products that are quick and easy to install with only the minimum fitting to be completed at the line side. Units are designed to fit onto existing back boards or within standard location case frame work, resulting in minimal intrusion and alterations are needed to complete an installation.

The product design and availability enables work to be completed in a full and timely manor, easing the process of bringing legacy equipment up to date to meet the latest standards.



Our SIN 119 Product Range

Unipart Rail provides an extensive range of Network Rail approved products to facilitate the upgrade of legacy signalling installations to comply with the requirements of Special Inspection Notice 119 - SIN 119.

FSP Products

Functional Supply Points (FSP)

The Unipart Rail PowerU range of FSP units are designed and manufactured in-house and offer a range of functional supply points for the upgrading of legacy switch gear as well as for new radial feeder configurations.

These PADs approved units meet the Network Rail specification NR/L2/SIGELP/27409 Iss.2 and are available in a range of sizes and configurations with varying functional supplies and a choice of fuse protection types.

We manufacture a full suite of FSPs including FSP01/02s, FSP03s and FSP04s.



Terminal Boxes

To complement our FSP offering, we provide a range of Terminal Boxes for incoming and outgoing power cables into new or legacy equipment. These boxes can terminate 2 or 4 core cables and have the ability to output 2 or 4 cores of cable to allow ultimate flexibility to the end user. These are available with stud or tunnel terminals with boxes accommodating cables from 6-50mm², 16-120mm² or 6-185mm² (stud only).

We also offer a choice of earth continuity boxes for varying sizes of cable to allow the connection of earthed cable to power Class II equipment.



PowerU Annex

The Unipart Rail PowerU Annex offers an innovative, cost effective Class II retrofit solution to existing apparatus housings. These PADS approved units meet all relevant Network Rail Product Specifications.

The PowerU Annex is designed so there is no requirement for civil works or additional concrete bases on site.



Transformers, Enclosures, Pedestals & Earthing Products

Class II Transformers and Transformer Rectifiers (TJs)

A wide range of PADs approved Transformers and Transformer Rectifiers (TJs) from multiple OEMs to cover all your Class II needs.

These include 650/100V domestic transformers from 50-250VA, hybrid transformers for 650/110V, 400-440/110V, 230/100V and 650/230V. All are available in a range of sizes from 250VA up to 4kVA.

We also stock TJs (Class II Hybrid Transformers/Rectifiers) for 650/120V, 400-440/120V or 230/120V, available in a variety of sizes.



Earthing Products

We can provide an extensive range of earthing products and accessories. Products include Earth Cable from 2.5-95mm², twin disconnect earth bars, bonds and clamps, composite and concrete inspection housings, earth mats, copper/aluminium bonding tape, and electrodes of various lengths and materials.



Enclosures and Pedestals

Our range of Class II rated enclosures and pedestals for trackside use are PADs approved.

We offer a variety of sizes with standard or 3 point locking systems from 300 x 250mm up to 800 x 600mm (HxW).

We can provide PADs approved mounting plates, fixing brackets and pedestals for the enclosure to be mounted onto.



Cable products - Cable, Glands, Termination & Protection

Class II FGT cable

We offer a wide range of Class II FGT cable, available in 2, 3 or 4 core configurations of varying cross sectional core sizes from 10mm² to 185mm². Both Copper or Aluminium cores are available as well as choice of insulation material including PVC or Low Smoke Zero Halogen.



Cable Glands & Reducers

Our cable product range includes glands that will fit all available Class II cable sizes. The range of PADs approved cable glands and hole size reducers can handle cables with an overall diameter of 6.5mm up to 55.9mm.

The reducers enable M63 holes to accommodate thread sizes of M20 to M50.



Cable Termination

For cable termination, we offer a range of standard pin and ring crimps as well as Bi-Metallic Connectors for use with aluminium cables.

The Bi-Metallic Connectors are available as pin or palm connectors for cable core sizes from 16mm² to 185mm².

Supporting accessories are available including heat shrink, adaptors, self amalgamating tape and conductive grease.



Cable Protection

PADs approved and meeting Network Rail Standards NR/L2/SIGELP/27421 and NR/LE/SIGELP/27422, we offer a wide range of conduits and fittings including conduits from 20mm up to 80mm as well a wide range of end fittings to suit. This includes straights, elbows (45° and 90 °) and T junctions, plus additional accessories as required.

The range allows for safe and compliant cable routing between units.



For information on the full Unipart Rail PowerU product range visit www.unipartrail.com/power.html or email enquiries@unipartrail.com

About Unipart

The Unipart Group is a leading UK manufacturer, full service logistics provider and consultant in operational excellence. Operating across a range of market sectors, including automotive, manufacturing, mobile telecoms, rail, retail and technology, Unipart offers a breadth of services to a wide range of blue chip clients internationally.

For information on the full Unipart Rail PowerU product range visit www.unipartrail.com/power.html

Unipart Rail

Leeman Road, York,
North Yorkshire YO26 4ZD
Tel: +44 (0)1904 544 020
Fax: +44 (0)1904 544 021
email: enquiries@unipartrail.com



Visit www.unipartrail.com for details
of our Worldwide Regional Offices