

- NOTES:
- 1) SEE DWG EID1189-2003 FOR INDIVIDUAL RACK DETAIL ASSEMBLY.
 - 2) SEE DWG EID1189-4001 FOR DITA-1 30kVA ELECTRICAL SCHEMATIC.
 - 3) SEE DWG EID1189-4002 FOR DITA-2 30kVA ELECTRICAL SCHEMATIC.
 - 4) SEE DWG EID1189-4003 FOR DITA-3 15kVA ELECTRICAL SCHEMATIC.
 - 5) FOR FUSE SIZES, SEE ABOVE SCHEMATIC DRAWINGS.
 - 6) SEE SHEET 2 FOR DETAIL 'A' SHOWING A INDIVIDUAL DITA SWITCHGEAR RACK
 - 7) 1x 15kVA & 2x 30kVA DITA CLASS II TRANSFORMERS (TX) NOT SHOWN ON DRAWING.

A		-	FIRST ISSUE	-	01/06/2021	AS
REV		ZONE	DESCRIPTION	QUERY I.D.	DATE	AUTHOR

REVISION HISTORY					
------------------	--	--	--	--	--

UNLESS OTHERWISE STATED, THE TOLERANCE OF DIMENSIONS SHALL BE AS BELOW.							
NOMINAL SIZE	OVER TO	0	6	30	120	400	1000
MACHINED		± 0.2	± 0.2	± 0.25	± 0.4	± 0.8	± 1.5
FABRICATED		± 0.5	± 0.5	± 0.5	± 1.0	± 1.0	± 2.0

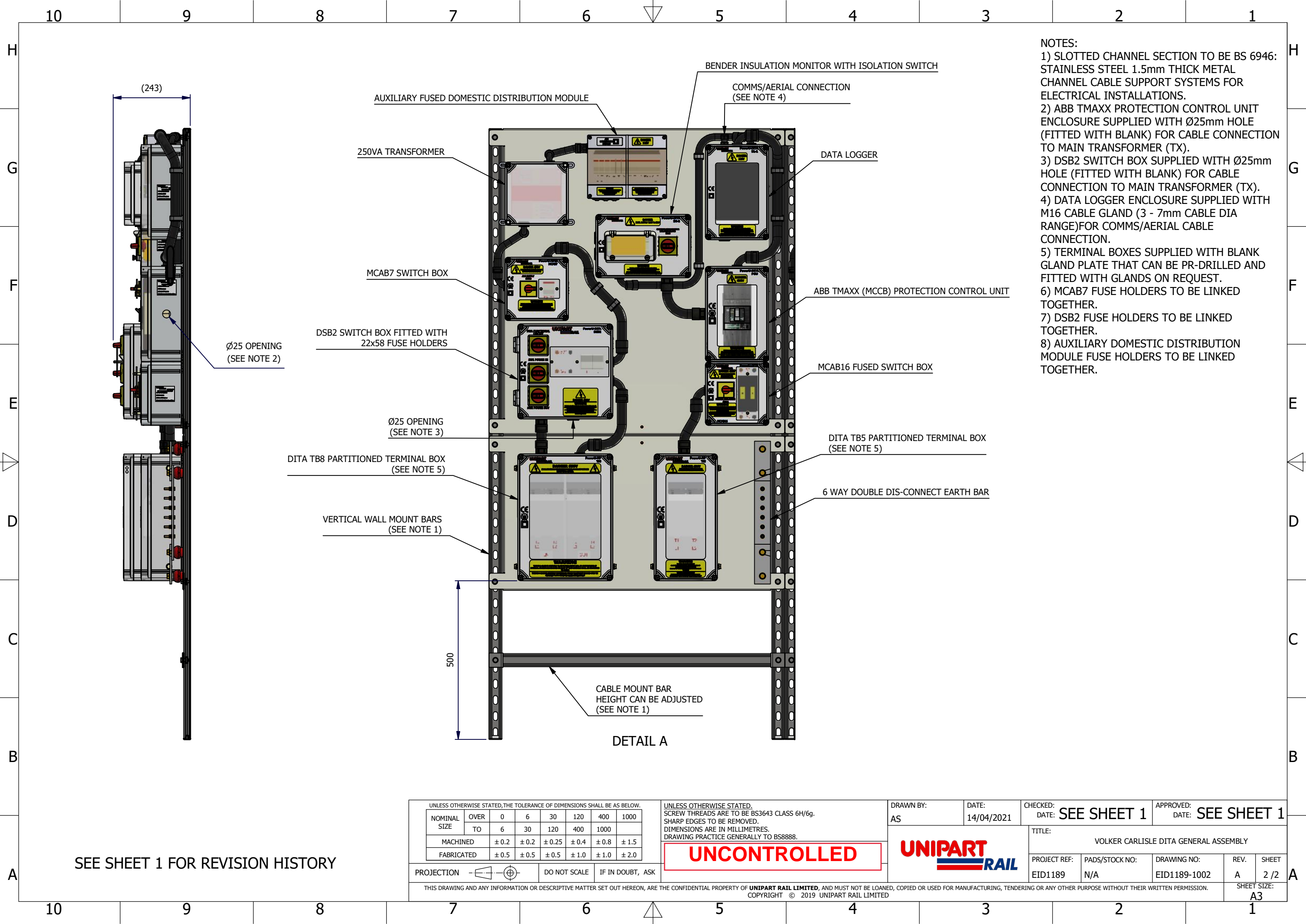
PROJECTION		DO NOT SCALE	IF IN DOUBT, ASK
------------	--	--------------	------------------

THIS DRAWING AND ANY INFORMATION OR DESCRIPTIVE MATTER SET OUT HEREON, ARE THE CONFIDENTIAL PROPERTY OF UNIPART RAIL LIMITED, AND MUST NOT BE LOANED, COPIED OR USED FOR MANUFACTURING, TENDERING OR ANY OTHER PURPOSE WITHOUT THEIR WRITTEN PERMISSION.

COPYRIGHT © 2019 UNIPART RAIL LIMITED

DRAWN BY:	AS	DATE:	14/04/2021	CHECKED:	DATE:	APPROVED:	DATE:
-----------	----	-------	------------	----------	-------	-----------	-------

TITLE: VOLKER CARLISLE DITA GENERAL ASSEMBLY				
PROJECT REF:	PADS/STOCK NO:	DRAWING NO:	REV.	SHEET
EID1189	N/A	EID1189-1002	A	1 / 2
				SHEET SIZE: A3



- NOTES:
- 1) SLOTTED CHANNEL SECTION TO BE BS 6946: STAINLESS STEEL 1.5mm THICK METAL CHANNEL CABLE SUPPORT SYSTEMS FOR ELECTRICAL INSTALLATIONS.
 - 2) ABB TMAXX PROTECTION CONTROL UNIT ENCLOSURE SUPPLIED WITH Ø25mm HOLE (FITTED WITH BLANK) FOR CABLE CONNECTION TO MAIN TRANSFORMER (TX).
 - 3) DSB2 SWITCH BOX SUPPLIED WITH Ø25mm HOLE (FITTED WITH BLANK) FOR CABLE CONNECTION TO MAIN TRANSFORMER (TX).
 - 4) DATA LOGGER ENCLOSURE SUPPLIED WITH M16 CABLE GLAND (3 - 7mm CABLE DIA RANGE)FOR COMMS/AERIAL CABLE CONNECTION.
 - 5) TERMINAL BOXES SUPPLIED WITH BLANK GLAND PLATE THAT CAN BE PR-DRILLED AND FITTED WITH GLANDS ON REQUEST.
 - 6) MCAB7 FUSE HOLDERS TO BE LINKED TOGETHER.
 - 7) DSB2 FUSE HOLDERS TO BE LINKED TOGETHER.
 - 8) AUXILIARY DOMESTIC DISTRIBUTION MODULE FUSE HOLDERS TO BE LINKED TOGETHER.

SEE SHEET 1 FOR REVISION HISTORY

UNLESS OTHERWISE STATED, THE TOLERANCE OF DIMENSIONS SHALL BE AS BELOW.								UNLESS OTHERWISE STATED. SCREW THREADS ARE TO BE BS3643 CLASS 6H/6g. SHARP EDGES TO BE REMOVED. DIMENSIONS ARE IN MILLIMETRES. DRAWING PRACTICE GENERALLY TO BS8888.				DRAWN BY: AS		DATE: 14/04/2021		CHECKED: DATE: SEE SHEET 1		APPROVED: DATE: SEE SHEET 1					
NOMINAL SIZE		OVER TO	0	6	30	120	400	1000	<div>UNCONTROLLED</div>				<div>UNIPART RAIL</div>		TITLE: VOLKER CARLISLE DITA GENERAL ASSEMBLY								
MACHINED		± 0.2	± 0.2	± 0.25	± 0.4	± 0.8	± 1.5	PROJECT REF: EID1189							PADS/STOCK NO: N/A		DRAWING NO: EID1189-1002		REV. A		SHEET 2 / 2		
FABRICATED		± 0.5	± 0.5	± 0.5	± 1.0	± 1.0	± 2.0	SHEET SIZE: A3															
PROJECTION				DO NOT SCALE		IF IN DOUBT, ASK		THIS DRAWING AND ANY INFORMATION OR DESCRIPTIVE MATTER SET OUT HEREON, ARE THE CONFIDENTIAL PROPERTY OF UNIPART RAIL LIMITED, AND MUST NOT BE LOANED, COPIED OR USED FOR MANUFACTURING, TENDERING OR ANY OTHER PURPOSE WITHOUT THEIR WRITTEN PERMISSION. COPYRIGHT © 2019 UNIPART RAIL LIMITED															