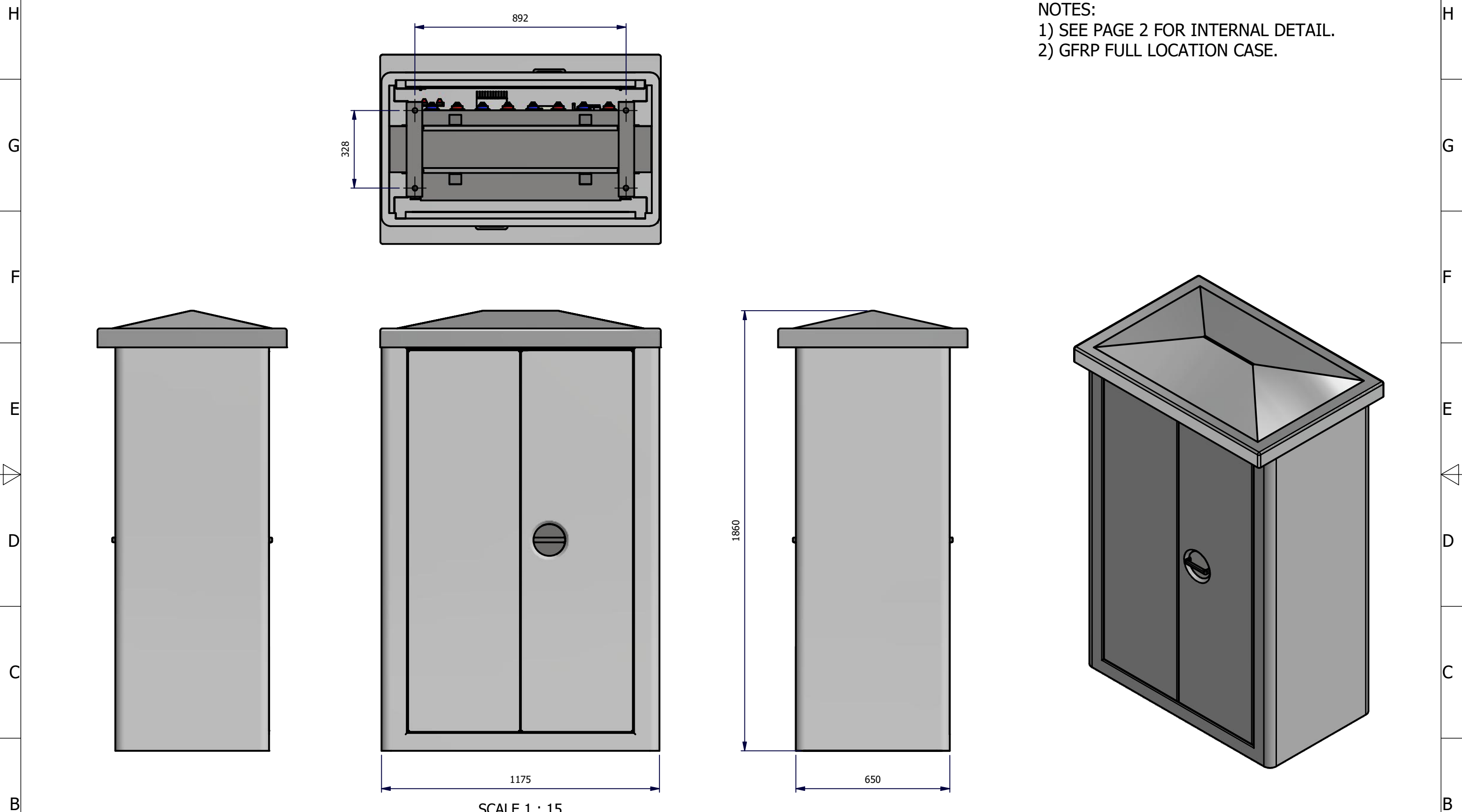


10 9 8 7 6 5 4 3 2 1



NOTES:
 1) SEE PAGE 2 FOR INTERNAL DETAIL.
 2) GFRP FULL LOCATION CASE.

SCALE 1 : 15

REV	ZONE	DESCRIPTION	QUERY I.D.	DATE	AUTHOR
C	-	FUSE HOLDER AND TERMINAL ARRANGEMENT UPDATED	-	03/10/2019	AS
B	-	LIFT OFF BATTERY COVER ADDED	-	26/09/2019	AS
A	-	MANUFACTURING ISSUE	-	21/08/2019	AS

REVISION HISTORY

UNLESS OTHERWISE STATED, THE TOLERANCE OF DIMENSIONS SHALL BE AS BELOW.							
NOMINAL SIZE	OVER TO	0	6	30	120	400	1000
		MACHINED	± 0.2	± 0.2	± 0.25	± 0.4	± 0.8
FABRICATED	± 0.5	± 0.5	± 0.5	± 1.0	± 1.0	± 2.0	

PROJECTION DO NOT SCALE IF IN DOUBT, ASK

UNLESS OTHERWISE STATED, SCREW THREADS ARE TO BE BS3643 CLASS 6H/6g. SHARP EDGES TO BE REMOVED. DIMENSIONS ARE IN MILLIMETRES. DRAWING PRACTICE GENERALLY TO BS8888.

UNCONTROLLED

DRAWN BY: A. SOUTHERN	DATE: 21/08/2019	CHECKED: DATE:	APPROVED: DATE:
TITLE: OFF GRID POWER SOLAR LOCATION CASE - GA			
PROJECT REF: EID1153	PADS/STOCK NO: N/A	DRAWING NO: EID1153-1002	REV. SHEET C 1/2
THIS DRAWING AND ANY INFORMATION OR DESCRIPTIVE MATTER SET OUT HEREON, ARE THE CONFIDENTIAL PROPERTY OF UNIPART RAIL LIMITED, AND MUST NOT BE LOANED, COPIED OR USED FOR MANUFACTURING, TENDERING OR ANY OTHER PURPOSE WITHOUT THEIR WRITTEN PERMISSION. COPYRIGHT © 2019 UNIPART RAIL LIMITED			SHEET SIZE: A3

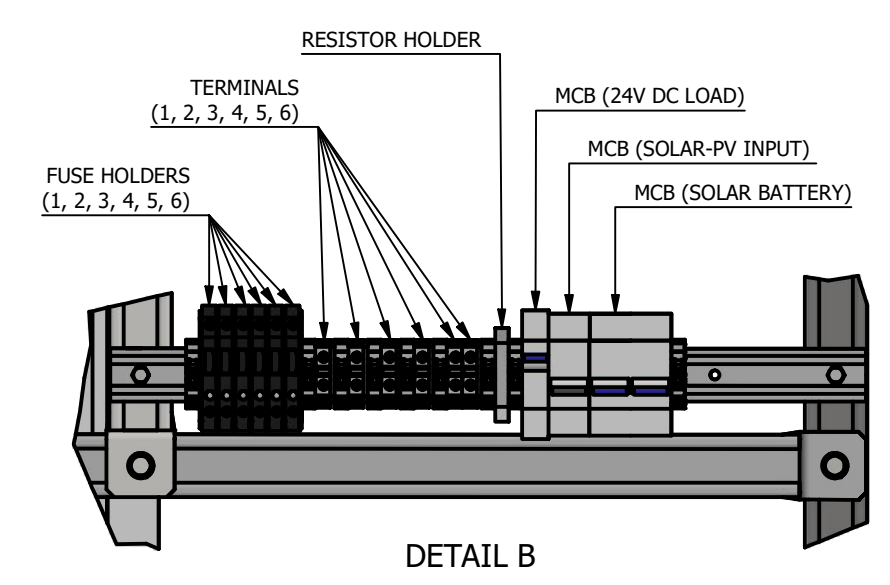
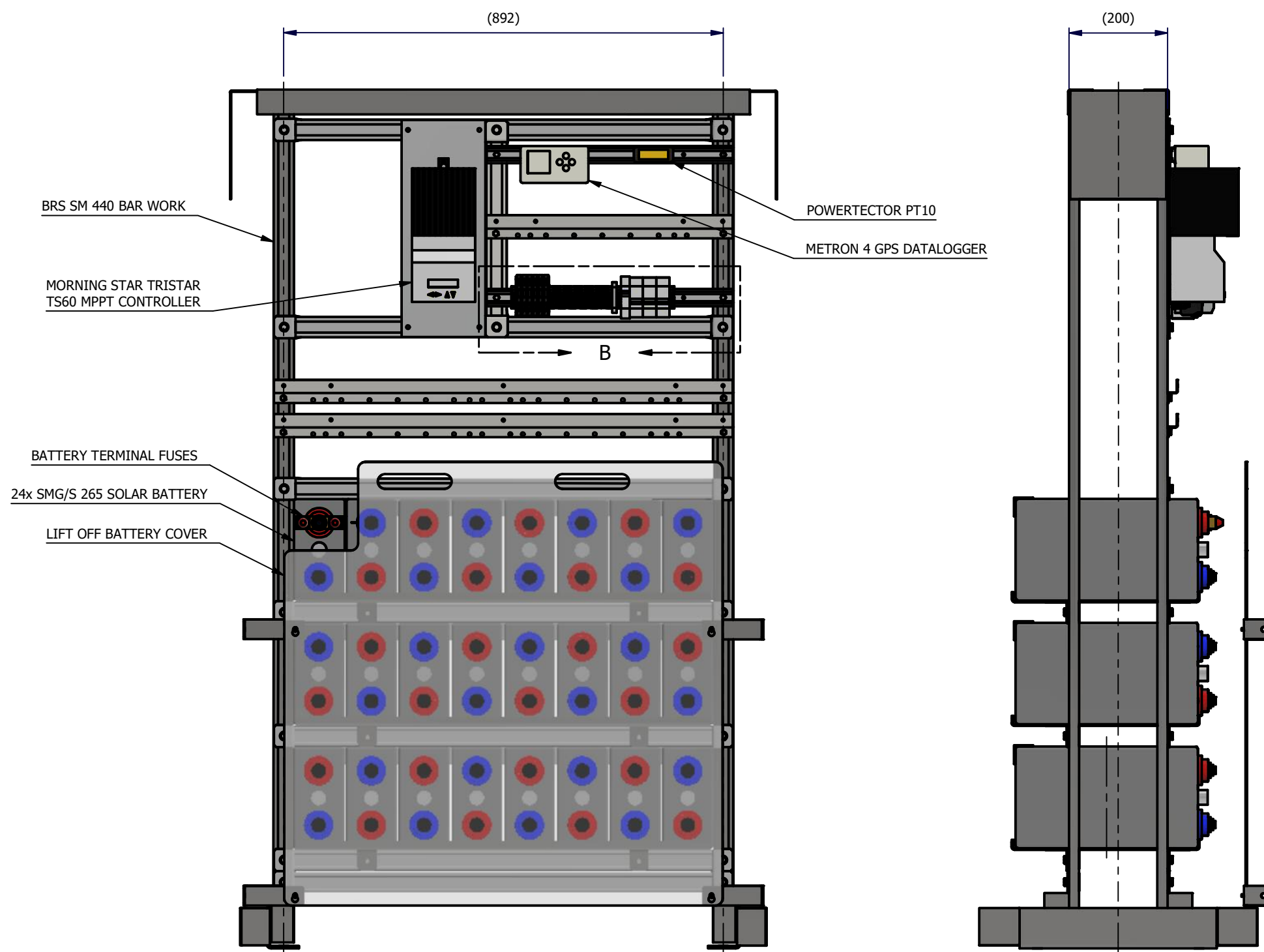
10 9 8 7 6 5 4 3 2 1

10 9 8 7 6 5 4 3 2 1

H
G
F
E
D
C
B
A

H
G
F
E
D
C
B
A

NOTES:
 1) SEE PAGE 1 FOR EXTERNAL DETAIL.
 2) CABLING, CONDUIT AND CABLE TRAY NOT SHOWN.
 3) FOR SCHEMATIC SEE DRG No. EID1153-4001



SCALE 1 : 10

FOR REVISION DETAILS SEE SHEET: 1

UNLESS OTHERWISE STATED, THE TOLERANCE OF DIMENSIONS SHALL BE AS BELOW.

NOMINAL SIZE	OVER TO	0	6	30	120	400	1000
		6	30	120	400	1000	
MACHINED		± 0.2	± 0.2	± 0.25	± 0.4	± 0.8	± 1.5
FABRICATED		± 0.5	± 0.5	± 0.5	± 1.0	± 1.0	± 2.0

PROJECTION DO NOT SCALE IF IN DOUBT, ASK

UNLESS OTHERWISE STATED,
 SCREW THREADS ARE TO BE BS3643 CLASS 6H/6g.
 SHARP EDGES TO BE REMOVED.
 DIMENSIONS ARE IN MILLIMETRES.
 DRAWING PRACTICE GENERALLY TO BS8888.

UNCONTROLLED

DRAWN BY: A. SOUTHERN	DATE: 21/08/2019	CHECKED: DATE:	APPROVED: DATE:
TITLE: OFF GRID POWER SOLAR LOCATION CASE - GA			
PROJECT REF: EID1153	PADS/STOCK NO: N/A	DRAWING NO: EID1153-1002	REV. SHEET C 2/2
THIS DRAWING AND ANY INFORMATION OR DESCRIPTIVE MATTER SET OUT HEREON, ARE THE CONFIDENTIAL PROPERTY OF UNIPART RAIL LIMITED, AND MUST NOT BE LOANED, COPIED OR USED FOR MANUFACTURING, TENDERING OR ANY OTHER PURPOSE WITHOUT THEIR WRITTEN PERMISSION.			SHEET SIZE: A3

10 9 8 7 6 5 4 3 2 1